

Lyndoch Preschool – Parent Handout

Times

Your child is entitled to attend preschool for up to 30 hours per fortnight.

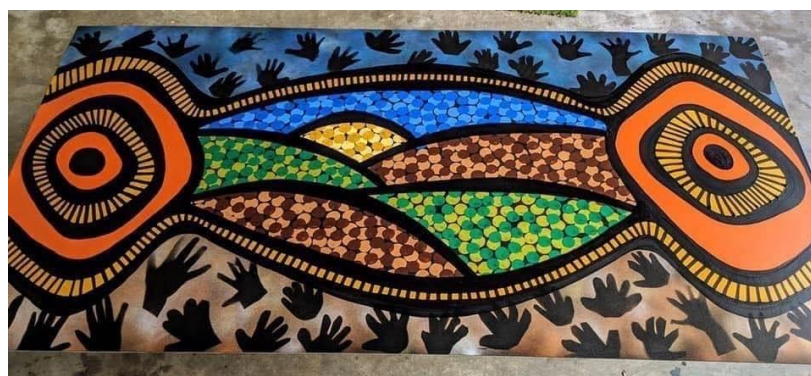
Odd weeks of Term (1, 3, 5, 7, 9) also week 11 in Term 1.

Tuesday	Wednesday	Thursday
9am to 3.00pm	9am to 3.00pm	-

Even weeks of Term (2, 4, 6, 8, 10)

Tuesday	Wednesday	Thursday
9am to 3.00pm	9am to 3.00pm	9am to 3pm

As of the 1st January 2022, the site known as
'Lyndoch Valley Family Centre'
Will be formally known and named
'Lyndoch Preschool'
as approved by the Education Department in December 2021.



Acknowledgement of Country

We acknowledge the traditional owners of the land we are on and pay our respects to their Elders past and present, and extend that respect to other Aboriginal people who are present today. Lyndoch is on Paramangk land.



Pack Bags



What to bring

Children need to bring these items each day:

- Preschool bag
- Drink bottle containing water only.
- Healthy snack (to stay in child's bag)
Fresh fruit, vegetables, cheese, crackers.
- Healthy packed lunch (to go in fridge)
- Broad-brimmed, bucket, or legionnaires hat.
PLEASE NO TOGGLES OR UNDER STRAPS ON HATS
- Change of clothes (a couple of sets – including socks and underwear!)
- Closed-in shoes or sandals are important for comfort and safety - crocs and thongs are not allowed.

Your child needs to wear clothing that covers their shoulders. No tank tops, or thin straps.

On days with a UV rating higher than 3, they must also wear sunscreen upon arrival to Preschool.

****Please see our sun safety and hot weather policy***

During winter, the Kindy has puddle suits and gum boots for outdoor play.

Please write your child's name on all their belongings.

What not to bring

Children should not bring these things:

- Food containing whole eggs, nuts, or traces of nuts (we are an allergy aware centre and some children have allergies that can be dangerous).
- Unhealthy food or drink (lollies, chocolate, chips, bars, fizzy drinks, Juice or Milks)

****Please see our Healthy eating Policy.***

- Toys and precious items from home – they can get lost, broken or cause issues amongst peers.

FEES

- Each child has a fee of \$110 per term.
- Fees help the site purchase materials and items for the Preschool children to access.
- BSB transfers are preferable

Lyndoch Valley Family Centre
BSB – 105-009
Account Number: 096838940

- If you are in need of a payment plan, please speak to the Director.
- A once upfront payment for the year will encourage a reduction price in fees.

Governing council and volunteers

We invite you to join the governing council, which meets twice a term to make sure the preschool runs smoothly. It allows parents to help contribute to the running of the centre.

Volunteers will also highly valued within our Preschool environment with odd jobs!

Our **Annual General Meeting (AGM)** is held in 1st Term.

****Please note Governing Council and volunteers will need to be fully vaccinated against COVID-19***



What's the purpose of Preschool?

We are often the first people for you to have trust in within an educational setting.

We offer a warm and welcoming place to nurture your child's social, emotional, and mental development.

We encourage nature play, creativity, and acceptance of others, and pride ourselves on building secure and respectful relationships with you and your family.

- **PLEASE SEE OUR STATEMENT PHILOSOPHY**



Preschool is about children learning through play.

Our learning through play programs will help your child develop their cooperation and communication skills, and help them become a confident and persistent learner.

Through this children's **dispositions of confidence, resilience, communication, persistence, cooperation** are needed for them to succeed in their learning journey.

Why? So your child can ask for help, be ok with making mistakes, to build in continuing to have a go and to navigate the social and emotional side of turn taking and sharing with others.

This later helps in the future classroom environment. For example –

- **Can I go to the toilet?**
- **I don't understand what the teacher has asked?**
- **Can I please have a turn? Yes, when I've finished with it.**

Play means each child engages in the Program at a level that suits them.

- Teachers will scaffold, challenge, engage and provoke children's thinking and learning.
- While children will challenge, engage and provoke their own thinking and learning. We have a strong belief in sustainability and will focus on developing your child's ongoing respect for our environment.
- We create Individual **Learning Plans (ILP's)** for your child with their family.

These plans include goals for your child that may need strengthening.

For example, speech and communication, strengthening fine motor muscles, social abilities. This is done in connection to the **EYLF (Early Years Learning Framework)**

You know your child best, so this is also done with your contribution.

- Our sites goals and our focus can be found in our philosophy statement and our annual **Preschool Quality Improvement Plans (PQIP)**
- Educators are open to discussions at any time.

If you think a chat might take longer than 5 minutes, please book a time for educators to speak to you in depth and privacy.

- Email is also a great way of contacting us, so is Messenger on our Facebook page.

Our Facebook page is used to share learning experiences at Preschool.

- We strongly encourage to follow this page to see everything that happens at Preschool.

Without using faces of our students, Educators post photos and explain the learning taking place at Lyndoch Valley Family Centre.

It is also a tool we use to communicate to families to keep up to date with what is happening at Preschool, it will also show useful hints and tips in relation to child development.



** CURRENTLY 'LYNDOCH VALLEY FAMILY CENTRE', IT WILL CHANGE TO 'LYNDOCH PRESCHOOL' ON 1ST JAN 2022