



Augusta Park Childhood Services Centre

P.O. Box 585 - 2 Bailey Street, Port Augusta, S.A. 5700
Telephone: (086) 42 3399



Government of South Australia

Department for Education

Parent Information Booklet 2021

Augusta Park Childhood Services Centre
2 Bailey Street
Port Augusta
dl.6605_leaders@schools.sa.edu.au
Ph: 8642 3399

Staffing

Director: Heather Honan
Teacher: Anne Baker
ECW: Amarly Meyers
ECW: Deb Tuip

Teacher: Janelle Templeman
Teacher: Lucy McTaggart
ECW: Jessie Packard
ECW: Teresa Packard

Sessions

Group A attends Monday and Tuesday - 8.30am – 3.30pm

Group B attends Wednesday and Thursday – 8.30am – 3.30pm

To make up the entitled 15 hours per week, two sessions on a Friday each term will be offered

The children eligible for the 12 hours a week program will attend in either Group A or Group B, but their session time will be 8.30am – 2.30pm

Daily Routine:

8:30am: Arrival: Children to find their name tag and attach it to a locker outside. Parents to sign their child(ren) in and support their child(ren) to sign in, put their water bottle on the drinks trolley and lunch box in the fridge. Children to then explore the inside learning environment

9:00am: Morning Group Time: Roll Call, Acknowledgement of Country, songs, Child Protection Curriculum (CPC) or Kimochis learning

9.20am Healthy snack time

9.40am Inside/Outside Play

11.20am Group Time: Literacy and Numeracy based activities

11.40am Lunch

12.00pm Relaxation: Rest, yoga, interoception activities, meditation (will vary each day)

12.20pm Inside Play

12.40pm Inside/Outside Play

2.00pm Afternoon snack

2.50pm Pack up

3.15pm Group time: Group activities and games

3.30pm Home time

Attendance

It is very important for your child(ren) to attend Preschool every session. If for some reason your child is away due to illness or family reasons, please contact the Preschool on 86423399 to inform educators.

If something has happened that might impact on your child's well-being while they are at Preschool, please talk to one of our staff members. All conversations are strictly confidential and only passed onto other educators on a need to know basis.

Curriculum

Play is very important for children. Through play young children explore and learn to understand the world around them as they come to communicate, discover, imagine and create. When children play they are showing what they have learned and what they are trying to understand. By working together parents and educators can enhance a child's learning and wellbeing.

Augusta Park Childhood Services Centre uses the Early Years Learning Framework for Australia, called 'Belonging, Being and Becoming'. It is a national framework for children from birth to five years. The Early Years Learning Framework describes childhood as a time of belonging, being and becoming:

Belonging: is the basis for living a fulfilling life. Children feel they belong because of the relationships they have with their family, community, culture and place.

Being: is about living here and now. Childhood is a special time in life and children need time to just 'be' - time to play, try new things and have fun.

Becoming: is about the learning and development that young children experience. Children start to form their sense of identity from an early age, which shapes the type of adult they will become.

The framework has 5 Outcomes:

Outcome 1: Children have a strong sense of identity.

Outcome 2: Children are connected with and contribute to their world.

Outcome 3: Children have a strong sense of wellbeing.

Outcome 4: Children are confident and involved learners.

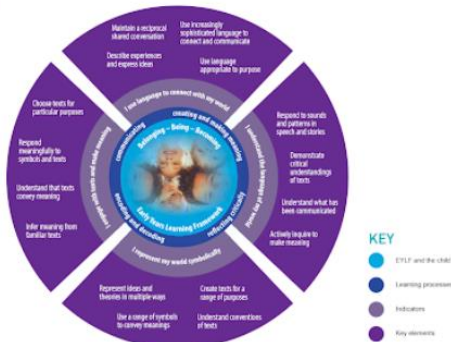
Outcome 5: Children are effective communicators.



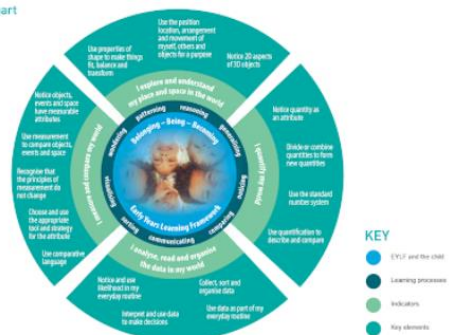
Literacy and Numeracy Indicators

These two indicators also heavily influence (and guide) the programming and planning which we do each week to extend children's interests, skills, knowledge and learning dispositions..

Literacy chart



Numeracy chart



Child Protection Curriculum

The Keeping Safe: Child Protection Curriculum (KS:CPC) is a safety program for children and young people from age 3 to year 12. It teaches children to:

- Recognise abuse and tell a trusted adult about it
- Understand what is appropriate and inappropriate touching
- Understand ways of keeping themselves safe.

The KS:CPC is mandated in all public Preschools and Schools and is taught every year by teachers who have completed a full day KS:CPC training course. It is a world-class, evidence-based child safety program that is used by a range of other Australian and International schools.

The program is made up of 2 main themes:

- We all have the right to be safe
- We can help ourselves to be safe by talking to people we trust

The 2 themes are explored through 4 focus areas:

- The right to be safe
- Relationships
- Recognising and reporting abuse
- Protective Strategies



Documenting Children's Learning

We document our learning journey at preschool in a large display book which is located near the sign in/out area. This Learning Journal contains information about the curriculum the children engage in, photos, children's drawings and their comments. The children love to browse through this book to re-visit their prior learning and look at photos of their family and friends. Regularly having a look through this book is a way that you can gain knowledge about what your child has been doing at preschool. Also please take the time to look around the walls of our preschool to notice the children's artwork and current learning.

Each week we will also send home a variety of artwork, photos and learning stories for you to use as a talking point with your child(ren) about learning they are doing at Preschool. We will be sending home a A4 display book at the beginning of the year. Feel free to place your child's learning in this book so you can create a folder of special memories from your child's time at Augusta Park Childhood Services Centre.

Assessment and reporting

Statement of Learning:

A Statement of Learning will be written during your child's year at preschool. The Statement of Learning reflects on your child's learning/development within the five outcome areas of the Early Years Learning Framework. Parents are invited to read, comment on them, sign and then the Preschool will forward them to the school your child is enrolled in.

Parent - Teacher Communication:

We believe that communication between educators and parents should be ongoing. We also ask that parents have regular conversations with educators, and that if you do have any concerns, to please arrange a time for a more formal discussion with the teacher. If educators have concerns, they will arrange to discuss these with you at a mutually convenient time.

Communication Pockets

Each child is allocated a note pocket. Information is placed in your child's note pocket on a regular basis.

Arrangements for alternative modes of communication - for example, when parenting is shared or when one parent or carer isn't able to access the preschool - can be easily made by discussing your needs with the Director.

Contributions and Accounts:

In 2021, the preschool fees (for children accessing 15 hours a week) currently are \$100.00 per term. For children accessing 12 hours a week, the cost is \$80 per term. Accounts are issued at the start of each term. Fees can be paid by Internet banking using the information on your invoice. Alternately you can place the correct money in an envelope that has your child's name and amount and post it in the box on the office door. A receipt will be issued by the Finance Officer via your child's note pocket. Contributions are reviewed by Governing Council at the end of each year in preparation for the following year.

Volunteering

We welcome your involvement. You may want to stay and read to children, help children with table activities or share a skill(s) with us. If you would like to join our weekly cooking program, spend some time gardening or reading stories with children we would love for you to be involved. Please talk to the Director who will then go through the process of how to volunteer at the Preschool.

Governing Council:

The Governing Council works in partnership with the preschool team to ensure the smooth running of the centre. It is a friendly group of parents who meet twice a term to discuss preschool priorities, financial matters, facilities, possible preschool functions, and curriculum directions. It is an excellent avenue to gain an understanding of how the preschool operates while making some good friends along the way. Governing council members and office bearers are elected at the Annual General Meeting. However, members may elect to join at any time during the year.

What to bring to Preschool

- ☑ A bag
- ☑ A legionnaires' style or broad brimmed hat
- ☑ A change of clothes
- ☑ Two serves of fruit to be left in your child's lunchbox
- ☑ A lunchbox containing their lunch, to be placed inside in the children's fridge
- ☑ A drink bottle with water

Please ensure all items are clearly labelled with your child's name

Clothes

Please only send your child to preschool in appropriate clothing, e.g. not their best outfits, sun safe and easy for them to manage independently (No tricky belts!). We do our best to protect your child's clothes with smocks for painting, but a lot of preschool learning can be messy. It is hard for children to fully engage in an activity if they are concerned about getting their clothes messy or wet. Please send a change of clothing in your child's bag in the event they have a toileting accident or get messy during the day. Preschool uniforms are available for purchase.

Facebook

Just search for Augusta Park Childhood Services Centre on Facebook to find our page. Like the page for quick updates about what is happening at preschool and to see photos of what has been happening. We no longer distribute newsletters at Augusta Park and use Facebook as our main form of communication.



Food at Preschool

At Augusta Park Childhood Services Centre, we believe in promoting an environment which encourages healthy eating and lifestyle. Please send a packed healthy lunch e.g. sandwich, roll, salad, dry biscuits and cheese, dip or yogurt. We ask that all children bring a drink bottle labelled with their name. Please only put water inside. Please NAME all containers. REMEMBER: Children need 2 serves of fruit, one for the morning and one for the afternoon. Water is always available. Please refer to our Food & Nutrition Policy for further information

Nut Free Zone

Please Note: At Augusta Park Childhood Services Centre, we are a nut-free zone. Please ensure food does not contain nuts eg. Peanut butter, Nutella and some muslie bars to name a few. Parents will be informed if other anaphylactic causing food allergies become necessary to eliminate from the centre. Thank you for your understanding.

Sunscreen

As part of our morning routine children apply sunscreen every day. Educators will support your child to reapply it at lunch time. If your child is sensitive to sunscreen, please see an educator and supply a NAMED sunscreen which can remain at preschool.

Toys

We ask that children do not bring their own toys to preschool as they are often broken or lost. If your child takes home a toy or item that you think is from the preschool, please return it as soon as you can.

Thank you for choosing Augusta Park Childhood Services Centre, we hope you find your Preschool year with us rich and rewarding. We look forward to you joining our Preschool community!

Kind Regards

Augusta Park Childhood Services Centre Educators