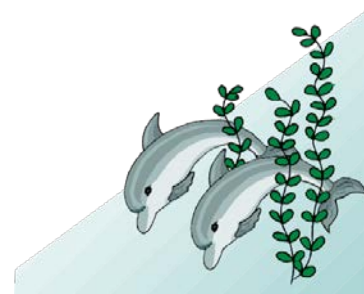


Elliston RSL Memorial Children's Centre

Hot Weather Policy



The following procedure is set out to ensure the health and safety of staff and children at our centre.

Our centre is well air-conditioned and remains at a comfortable temperature on hot days. Once the outside temperature reaches 35°C the director will make the decision to keep children inside during opening hours and children will be offered an alternate Kindy program. This also applies during other extreme weather conditions ie dust storms/wind, thunder and lightning etc.

In extenuating circumstances when the temperature inside becomes uncomfortable (ie due to an air conditioner malfunction or extended power outages) parents will be called to collect their child/ren. Should a parent/or nominee be unable to collect a child, staff will try to make every endeavour to keep the child as cool as possible within the centre until they are collected.

Any excursions or outings will be cancelled when the forecast is over 30 and where possible rescheduled.

On warm days children are encouraged to drink more and cooled water (if tap water is hot) will be provided. Children have access to a refrigerator and children are taught to independently put their lunch boxes in the fridge. On warmer days we encourage children to play in the shade and all planned physical activity is done in the morning.

For accurate record keeping, parents are asked to notify the centre if they choose to keep their children home due to the weather.

Any purchase of equipment must give consideration to the construction materials and location of the item in regard to heat and the risk of burns.

At Elliston Kindy we have a sun smart policy which compliments this procedure.

Approved February 2018
Next review 2021