

Quality Improvement Plan for

2022

Service name

Service approval number

Acknowledgement of Country

We acknowledge the people as the traditional custodians of the lands and waters where our centre is located and recognise their continuing connection to country. We pay our respects to Elders past and present, and extend that respect to all Aboriginal peoples.

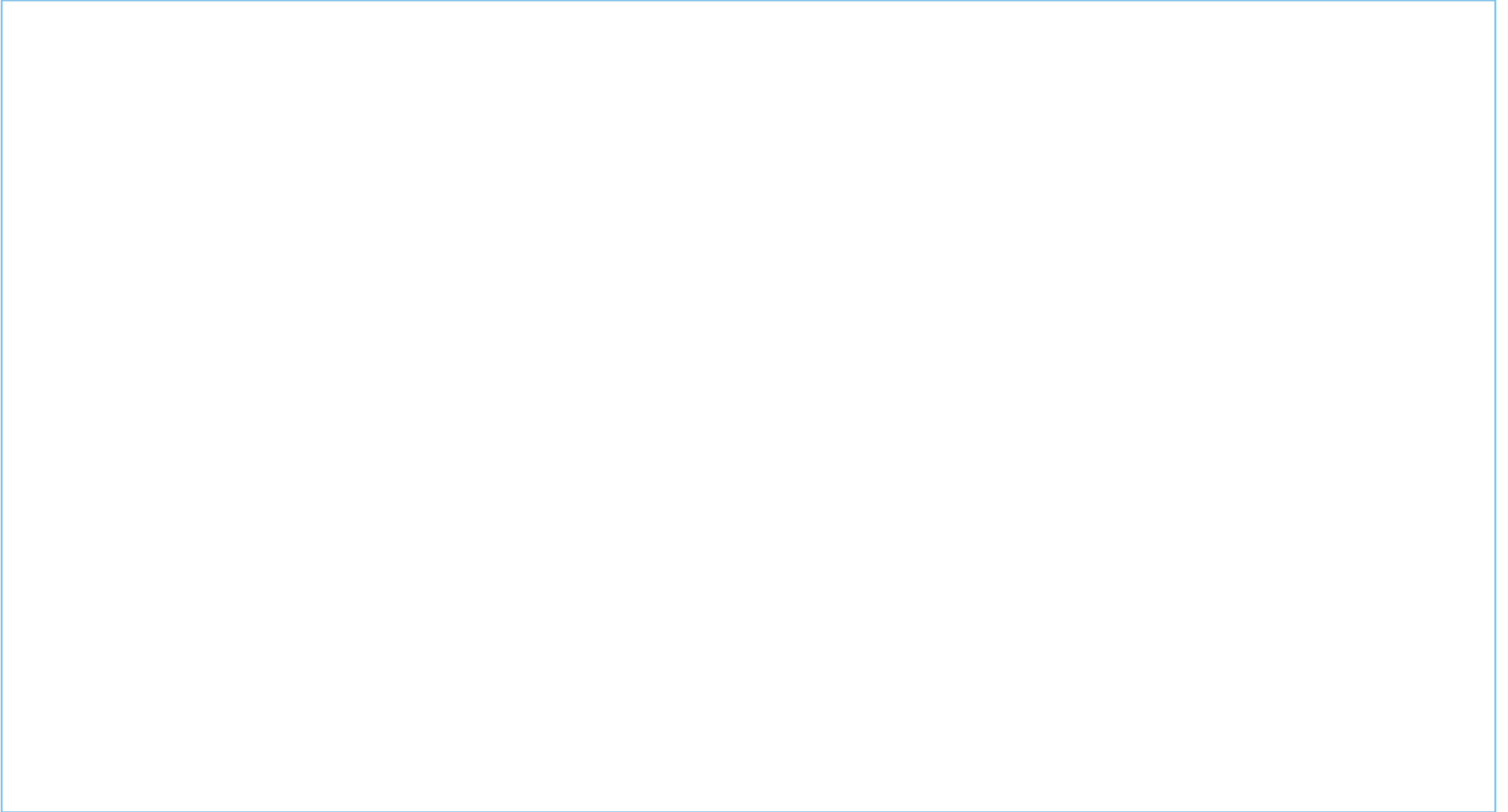
[Click to upload logo](#)



**Government
of South Australia**
Department for Education

Context

Service Context



Context

Statement of Philosophy

Enter your site philosophy in the box below, or alternatively attach as an additional document via the Comment option under the Tools tab

Strengths

With reference to the three exceeding themes:

1. Practice is embedded in service operations
2. Practice is informed by critical reflection
3. Practice is shaped by meaningful engagement with families and/or the community



5

Review
and evaluate

Quality Area 1: Educational Program and Practice

Strengths

With reference to the three exceeding themes:

1. Practice is embedded in service operations
2. Practice is informed by critical reflection
3. Practice is shaped by meaningful engagement with families and/or the community



5

Review
and evaluate

Quality Area 2: Children's Health and Safety

Strengths

With reference to the three exceeding themes:

1. Practice is embedded in service operations
2. Practice is informed by critical reflection
3. Practice is shaped by meaningful engagement with families and/or the community



5

Review
and evaluate

Quality Area 3: Physical Environment

Strengths

With reference to the three exceeding themes:

1. Practice is embedded in service operations
2. Practice is informed by critical reflection
3. Practice is shaped by meaningful engagement with families and/or the community



5

Review
and evaluate

Quality Area 4: Staffing Arrangements

Strengths

With reference to the three exceeding themes:

1. Practice is embedded in service operations
2. Practice is informed by critical reflection
3. Practice is shaped by meaningful engagement with families and/or the community



5

Review
and evaluate

Quality Area 5: Relationships with Children

Strengths

With reference to the three exceeding themes:

1. Practice is embedded in service operations
2. Practice is informed by critical reflection
3. Practice is shaped by meaningful engagement with families and/or the community



5

Review
and evaluate

Quality Area 6: Collaborative Partnerships with Families and Communities

Strengths

With reference to the three exceeding themes:

1. Practice is embedded in service operations
2. Practice is informed by critical reflection
3. Practice is shaped by meaningful engagement with families and/or the community



5

Review
and evaluate

Quality Area 7: Governance and Leadership

Quality Improvement Plan for

2022

Includes:

- Learning Improvement goals
- National Quality Framework priorities

How to complete this template

- Complete every step. The Preschool Quality Improvement Planning handbook explains how to do this. In addition your education director will provide support.
- Complete steps 1 to 3 during term 4 and have it approved by the director/principal, governing council chairperson and education director.
- Email this plan (steps 1 – 3) to your education director.
- Ensure your preschool quality improvement plan is readily available on request to parents and families, and officers of the Education Standards Board.
- Work through step 4 (Improve Practice and Monitor Impact) regularly throughout the year.
- Complete step 5 (Review and Evaluate) in term 4 of each year.
- Your complete quality improvement plan should be reviewed and updated in term 4 each year.

For further information and advice contact your local education team.

Learning Improvement Plan



Goal 1:

Challenge of practice:

Success criteria

Learning Improvement Plan

Goal 1 continued



1
Analyse
and prioritise



2
Determine
challenge of
practice



3
Plan
actions for
improvement

| Actions | NQS links | Timeline | Roles and responsibilities | Resources |
|---------|-----------|----------|----------------------------|-----------|
| | | | | |
| | | | | |
| | | | | |
| | | | | |
| | | | | |

Learning Improvement Plan



Goal 2:

Challenge of practice:

Success criteria

Learning Improvement Plan

Goal 2 continued



1
Analyse
and prioritise



2
Determine
challenge of
practice



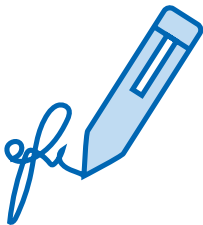
3
Plan
actions for
improvement

| Actions | NQS links | Timeline | Roles and responsibilities | Resources |
|---------|-----------|----------|----------------------------|-----------|
| | | | | |
| | | | | |
| | | | | |
| | | | | |
| | | | | |

National Quality Framework priorities

| Priority | NQS links | Key steps | Timeline | Resources | Roles and responsibilities |
|----------|-----------|-----------|----------|-----------|----------------------------|
| | | | | | |
| | | | | | |
| | | | | | |
| | | | | | |
| | | | | | |
| | | | | | |
| | | | | | |
| | | | | | |
| | | | | | |

Endorsements



Endorsed by director/principal

Name

Date

Endorsed by governing council chairperson

Name

Date

Endorsed by education director

Name

Date