

The Central Eyre Education Partnership in South Australia caters for students in the geographical area that spans from Elliston on the West Coast of the Eyre Peninsula to Cowell and Tumby Bay on the East Coast. The Partnership also encompasses all the area in between.

### Area Schools

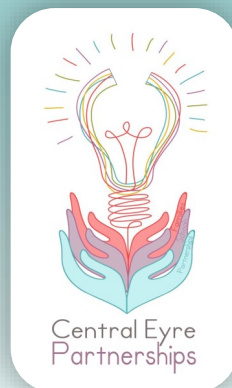
Cowell Area School  
 Cleve Area School  
 Cummins Area School  
 Elliston Area School  
 Kimba Area School  
 Lock Area School  
 Tumby Bay Area School  
 Wudinna Area School

### Primary Schools

Port Neill Primary School  
 Ungarra Primary School

### Preschools

Cleve District Children's Centre  
 Cowell Early Childhood Centre  
 Cummins Preschool  
 Elliston RSL Memorial Children's Centre  
 Lock Early Learning Centre  
 Kimba Community Kindergarten  
 Tumby Bay Kindergarten  
 Wudinna RSL Memorial Kindergarten



Government of South Australia  
 Department for Education

## Central Eyre Education Partnership



Central Eyre  
 Partnerships

Schools and Preschools  
*working together*  
 to achieve improved  
 learning outcomes.



Government of South Australia  
 Department for Education

# Central Eyre Education Partnership

## Did you know?

- ◆ Our Pre-Schools provide rich play based learning with strong links to Literacy and Numeracy, Nature Play and STEM.
- ◆ There is a consistent focus in our Junior Primary classes on literacy and numeracy. Programs have an emphasis on learning through exploration as well as through explicit teaching.
- ◆ NAPLAN achievement in the Central Eyre Schools is generally above state averages.
- ◆ All schools are focusing on developing positive attitudes to learning – fostering the development of resilience and of a growth mindset. We want to encourage students to have a go and accept that a mistake is a learning opportunity.
- ◆ Most of our Area Schools have a dedicated middle school that use specific teaching and learning strategies designed to engage and accommodate adolescent learners.
- ◆ Around 97% of our Year 12 students achieve their South Australian Certificate of Education. (SACE)
- ◆ Because of our location Central Eyre Year 12 students gain bonus points towards their university entry score (ATAR). City based students do not attract these points.
- ◆ Central Eyre schools offer a range of Vocational Education and Training (VET) subjects. This means students can be involved in practical vocational subjects and school based apprenticeships which count as part of their Year 11 and 12 school learning.
- ◆ Schools on the Eyre Peninsula work together to offer a broad range of subjects. This means that our Year 11s and 12s can do subjects delivered by teachers from other EP schools such as Port Lincoln High and Edward John Eyre High School (in Whyalla) as well as from other local Area Schools. Lessons are usually delivered once or twice a week through video links supplemented with face to face visits.

## Collaborate



### Our Mission

To work collaboratively as sites to provide excellent educational opportunities, outcomes and advocacy for children, families and the communities across

Central Eyre Peninsula.

## Innovate

To build capacity, as a partnership, by facilitating shared leadership, professional learning communities, collaborative opportunities and innovation.

## Participate



## Persist Learn



## Enjoy

### Partnership Contact Information

Contact your local school or preschool or the

Department for Education  
Pt Lincoln Office:

Phone: 86820700  
3/7 Mortlock Terrace,  
Port Lincoln SA 5606

### **Education Directors**

CEP 1 - Rowena Fox  
CEP 2 - Tammy Williams

### Central Eyre Partnership priorities.

- ◆ Early years
- ◆ Literacy and Numeracy
- ◆ Quality teaching and learning
- ◆ Science, Technology, Engineering and Maths (STEM)
- ◆ Student voice
- ◆ Leadership development