

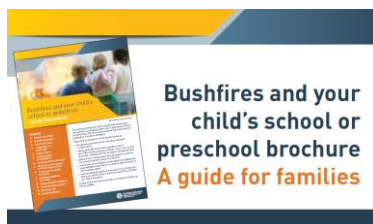
GLOSSOP PRIMARY COMMUNITY SCHOOL is located in a high-risk bushfire area.

While we have an emergency and bushfire response plan for our site it is important that we are all prepared for a bushfire emergency.

Parent and family checklist

We all need to be ready for the fire danger season and to keep your children as safe as possible, please ensure you:

- request a copy of the *Bushfire and Your Child's School or Preschool* brochure from your site or download a copy from the DECD Bushfire and Emergency Management website



- request a DECD Emergency Information Hotline fridge magnet from your site
- read all of the bushfire information provided to you
- talk with your children about what will happen if a bushfire occurs when they are at school or preschool
- update your emergency contact details with us before the start of the fire danger season

- make a personal Bushfire Survival Plan for your family and let us know how this will affect your child's attendance

'Catastrophic' fire danger days

'Catastrophic' fire danger days occur when conditions are the worst for a bush or grass fire.

If a fire starts and takes hold on a 'catastrophic' day it will be extremely difficult to control.

When a catastrophic fire danger rating is forecast for the following day by the Bureau of Meteorology, all 'high-risk' schools and preschools in the declared fire ban district will be closed.

Stay Informed

Know your child's school or preschool bushfire response plan and:

- follow the CFS, SES, SAPOL and DECD social media platforms (e.g. Facebook, Twitter)
- bookmark the CFS, SES, SAPOL and DECD websites so you can easily access them in an emergency

If a bushfire approaches us

The safety of children in our care is our highest priority if a bushfire approaches our site.

We have a designated bushfire refuge, which is the safest place for staff and students to be in this situation.

Evacuation is our last option unless advised otherwise by emergency services.

When we move to our bushfire refuge we:

- move everybody inside, close windows, doors, and turn off the air conditioning
- fill available containers with water
- turn on any sprinklers and irrigation systems if it is safe and time permits
- remain inside with the children until the main firefront passes
- listen to local radio or monitor the website for bushfire updates and information
- liaise with DECD Security and Emergency Management and the CFS to stay informed about changing conditions

Further information

Department for Education and Child Development

DECD Emergency Information Hotline

1800 000 279

The DECD Emergency Information Hotline operates during business hours, with an out-of-hours messaging service at other times.

The hotline is the best source of current and up-to-date information on bushfire emergencies.

Bushfire and Emergency Management website

www.decd.sa.gov.au/sites-and-facilities/bushfires-and-emergency-closures/bushfire-information

Country Fire Service

Bushfire Information Hotline

1300 362 361

Website www.cfs.sa.gov.au

State Emergency Service

Flood and Storm Response

132 500

Website www.ses.sa.gov.au

GLOSSOP PRIMARY COMMUNITY SCHOOL has a 'high risk' bushfire rating

This means:

- our site will be closed on days with a forecast 'catastrophic' fire danger rating
- vacation or out of school hours care will also be closed
- no persons (staff, students, contractors etc.) will be on site
- school buses and taxis will not operate within the fire ban district
- families will need to make alternative arrangements for their children on these days

We will contact families to inform of closures.

Our phone number is 8583 2386

If this number is engaged during an emergency, contact;



**DECD
Emergency
Information
Hotline**

1800 000 279

Fire Danger Season 2017-18

Information for Families



**Government
of South Australia**

Department for Education
and Child Development